

MATRIX

HORIZONTAL MULTISTAGE CENTRIFUGAL ELECTRIC PUMPS

in AISI 304



Horizontal multistage centrifugal electric pumps in AISI 304 stainless steel.

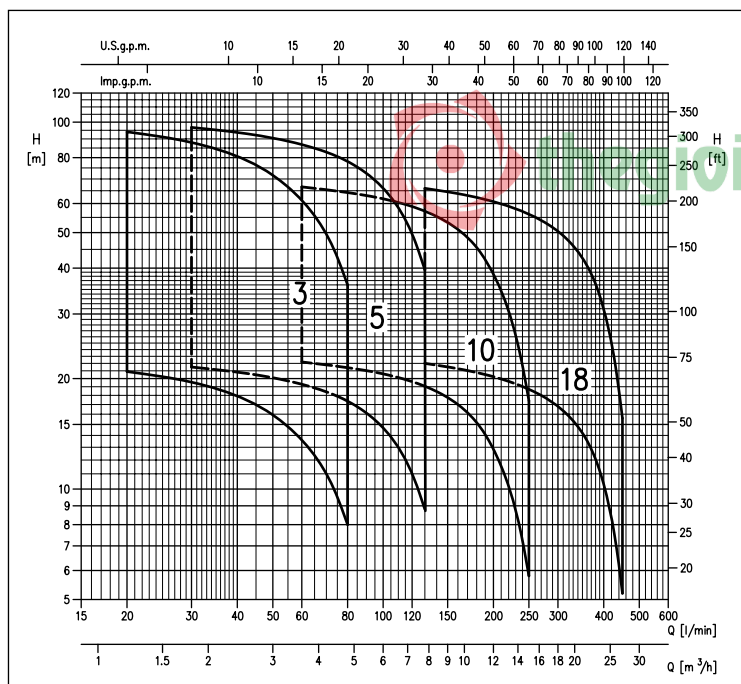
APPLICATIONS

- Industrial washing
- Pressure boosting units
- Industrial plants
- Distribution and treatment of water
- Heating and air conditioning
- Cooling and chiller
- Irrigation
- Recovery of rain water

TECHNICAL DETAILS

- Sturdy and compact structure
- Available in various versions and models
- WRAS approval for the standard version (up to +85° C) and DM174 (up to +110° C)

PERFORMANCE RANGE (according to ISO 9906 Attachment A)



PUMP TECHNICAL DATA

- Temperature of the liquid: from -15° to +85° C (standard) from -15° to +110° C (for TE version for high temperature)
- Maximum working pressure: 10 bar
- Maximum chlorine content: 500 ppm
- Suction connection G1 for MATRIX 3, G1¼ for MATRIX 5, G1½ for MATRIX 10, G2 for MATRIX 18
- Discharge connection G1 for MATRIX 3-5, G1¼ for MATRIX 10, G1½ for MATRIX 18

MOTOR TECHNICAL DATA

- IE3 high energy-efficiency motors starting from 0.75kW
- Self-ventilated 2 pole asynchronous motor
- Class of insulation F
- IP55 protection degree
- 230V ±10% 50Hz single phase voltage, 230/400V ±10% 50Hz three phase voltage
- Permanent capacitor inserted and thermo-amperometric protection with automatic rearm incorporated for the single phase motor
- Protection under user's responsibility for the three phase version

MATERIALS

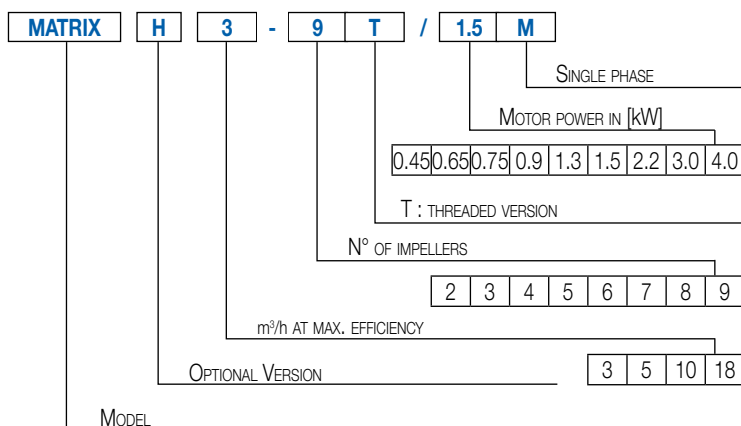
- Pump casing, impellers, intermediate stages, seal housing disc and shaft (part in contact with the liquid) in EN 1.4301 (AISI 304)
- Mechanical seal in:
 - Ceramic/Carbon/EPDM (standard)
 - special versions: see p. 43
- Bracket in EN AB-AISI11Cu2(Fe) (microcasted aluminium)

ACCESSORIES (On request)

- Insulation casing for MATRIX pump casing for applications with refrigerant liquids or liquids with high thermal difference that may generate condensate
- Electric panels
- Vessels
- Floats
- Pressure switches
- Presscomfort - Pressure regulator
- E-power - Variable speed control system
- E-drive - Variable speed control system



IDENTIFICATION CODE





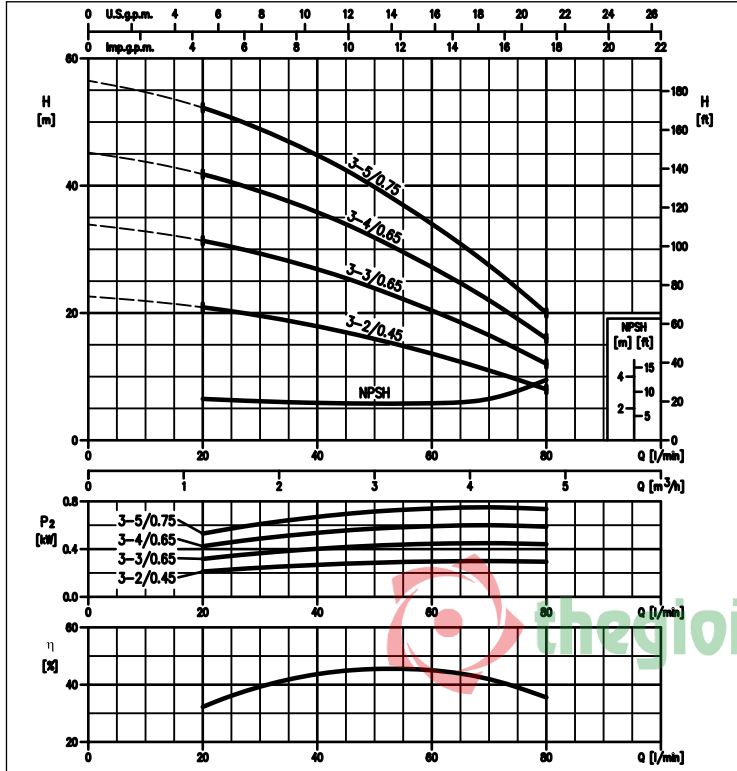
MATRIX

HORIZONTAL MULTISTAGE CENTRIFUGAL ELECTRIC PUMPS

in AISI 304

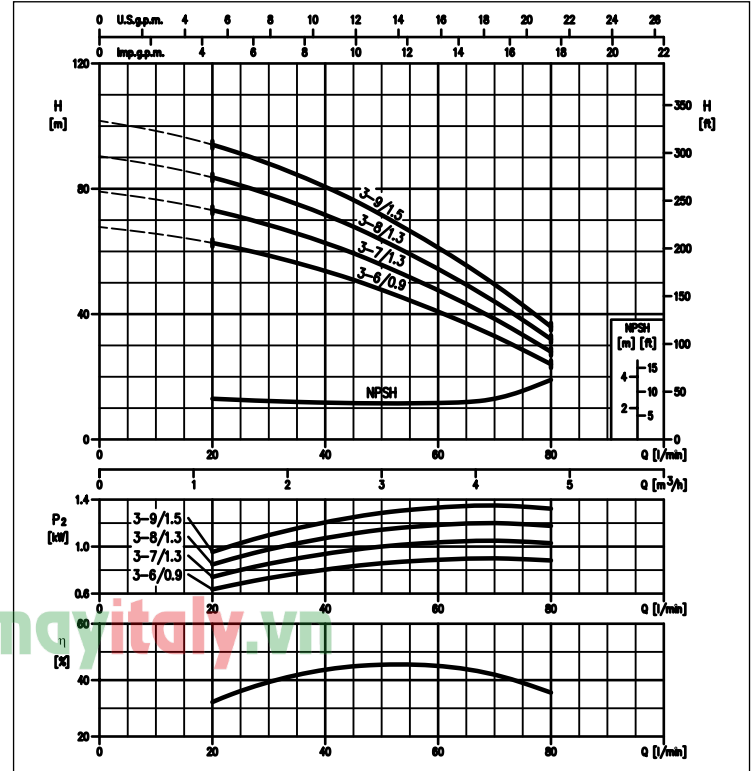
PERFORMANCE CURVES series MATRIX 3 (from 2 to 5 impellers)

(according to ISO 9906 Attachment A)



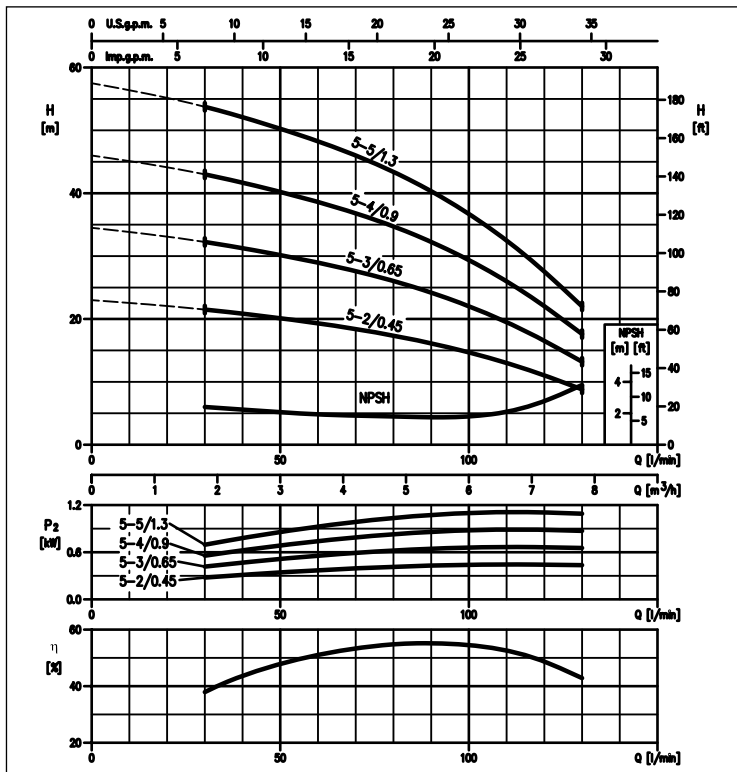
PERFORMANCE CURVES series MATRIX 3 (from 6 to 9 impellers)

(according to ISO 9906 Attachment A)



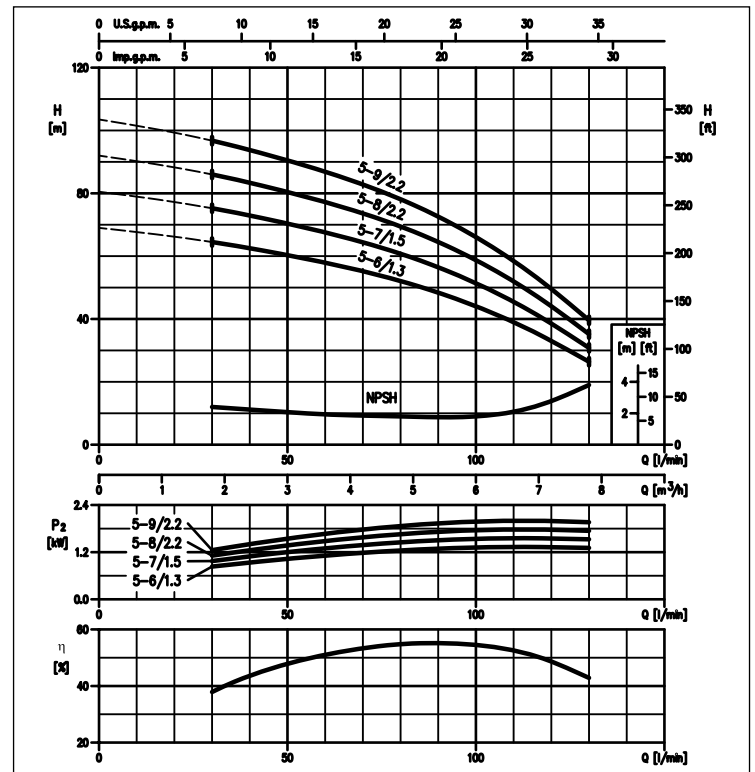
PERFORMANCE CURVES series MATRIX 5 (from 2 to 5 impellers)

(according to ISO 9906 Attachment A)



PERFORMANCE CURVES series MATRIX 5 (from 6 to 9 impellers)

(according to ISO 9906 Attachment A)



The content of this publication should not be considered mandatory. EBARA Pumps Europe S.p.A. reserves the right to change the content without prior notice.



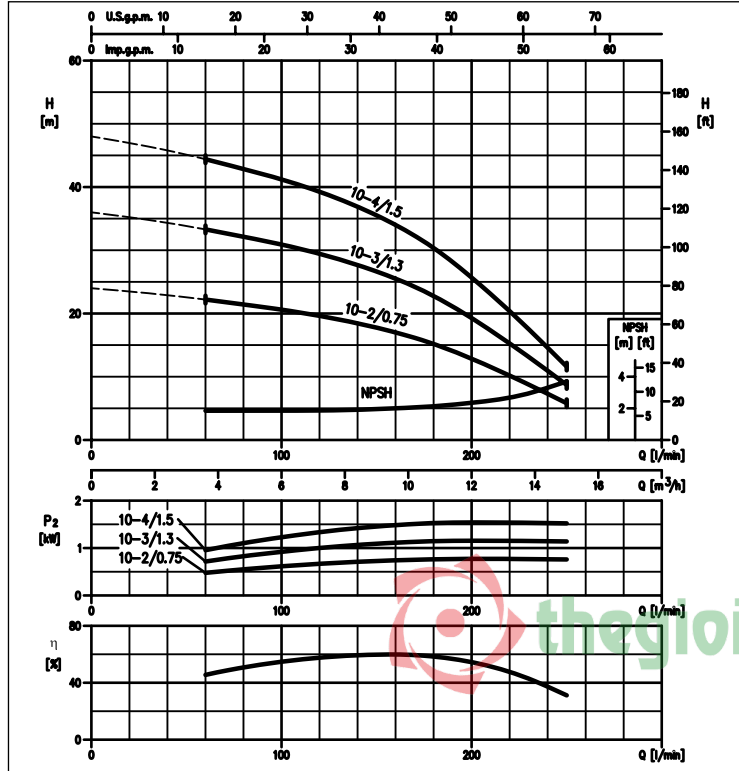
MATRIX

HORIZONTAL MULTISTAGE CENTRIFUGAL ELECTRIC PUMPS

in AISI 304

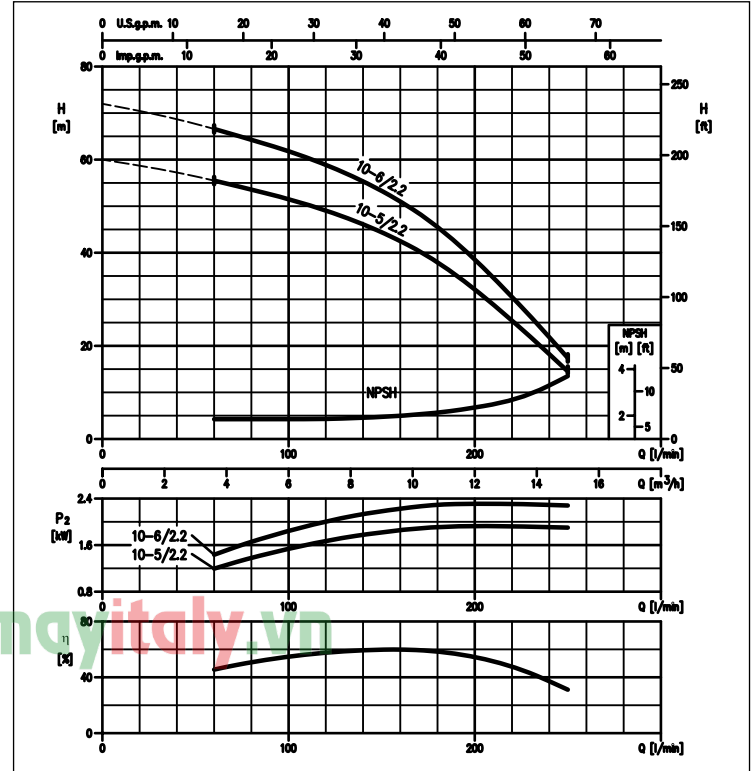
PERFORMANCE CURVES series MATRIX 10 (from 2 to 4 impellers)

(according to ISO 9906 Attachment A)



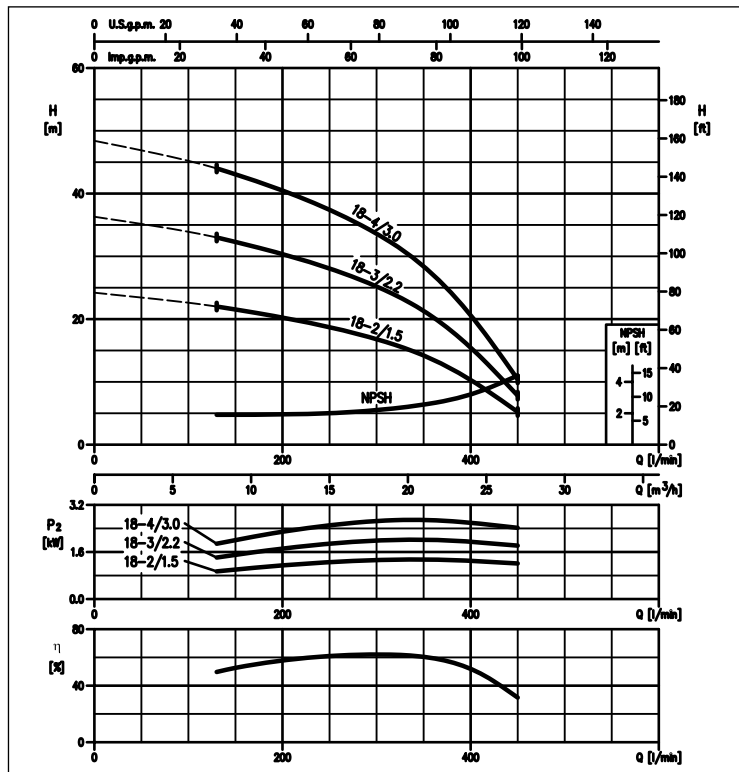
PERFORMANCE CURVES series MATRIX 10 (from 5 to 6 impellers)

(according to ISO 9906 Attachment A)



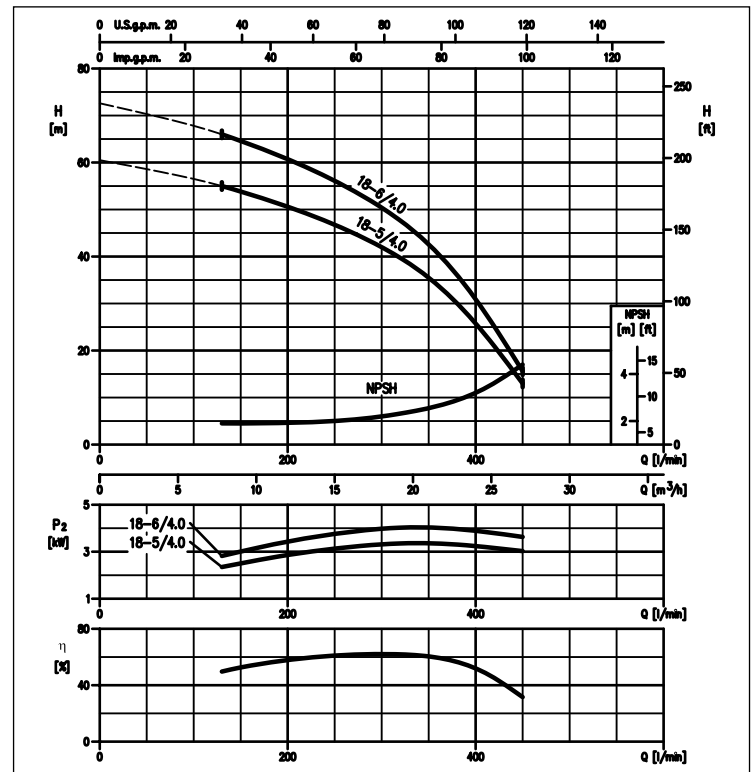
PERFORMANCE CURVES series MATRIX 18 (from 2 to 4 impellers)

(according to ISO 9906 Attachment A)



PERFORMANCE CURVES series MATRIX 18 (5 and 6 impellers)

(according to ISO 9906 Attachment A)



The content of this publication should not be considered mandatory. EBARA Pumps Europe S.p.A. reserves the right to change the content without prior notice.

MATRIX

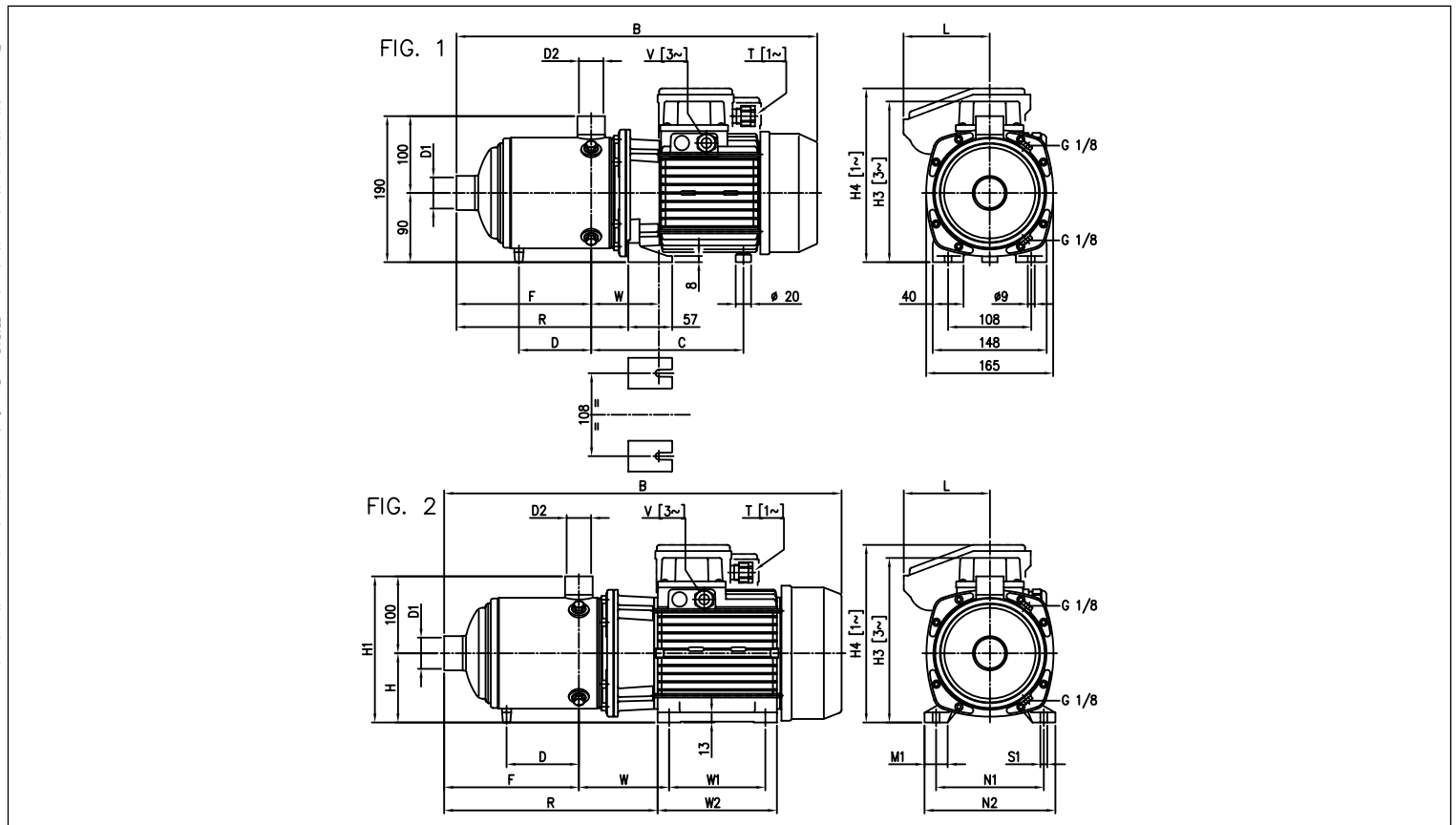
HORIZONTAL MULTISTAGE CENTRIFUGAL ELECTRIC PUMPS

in AISI 304

PERFORMANCE CHART

Single phase 230V	Model Three phase 230/400V	P ₂		Q = Flow Rate															
		[HP]	[kW]	l/min 20	30	45	60	80	100	130	160	200	250	300	350	400	450		
				m ³ /h 1.2	1.8	2.7	3.6	4.8	6	7.8	9.6	12	15	18	21	24	27		
				H=Head [m]															
MATRIX 3-2T/0.45M	MATRIX 3-2T/0.45	0.6	0.45	20.9	19.6	17.0	13.6	8.0	-	-	-	-	-	-	-	-	-		
MATRIX 3-3T/0.65M	MATRIX 3-3T/0.65	0.9	0.65	31.4	29.3	25.5	20.4	12.0	-	-	-	-	-	-	-	-	-		
MATRIX 3-4T/0.65M	MATRIX 3-4T/0.65	0.9	0.65	42.0	39.1	34.0	27.2	16.0	-	-	-	-	-	-	-	-	-		
MATRIX 3-5T/0.75M	MATRIX 3-5T/0.75	1	0.75	52.5	49.0	42.5	34.0	20.0	-	-	-	-	-	-	-	-	-		
MATRIX 3-6T/0.9M	MATRIX 3-6T/0.9	1.2	0.9	62.5	58.5	51.0	41.0	24.0	-	-	-	-	-	-	-	-	-		
MATRIX 3-7T/1.3M	MATRIX 3-7T/1.3	1.8	1.3	73.0	68.5	59.5	47.5	28.0	-	-	-	-	-	-	-	-	-		
MATRIX 3-8T/1.3M	MATRIX 3-8T/1.3	1.8	1.3	83.5	78.0	68.0	54.5	32.0	-	-	-	-	-	-	-	-	-		
MATRIX 3-9T/1.5M	MATRIX 3-9T/1.5	2	1.5	94.0	88.0	76.5	61.0	36.0	-	-	-	-	-	-	-	-	-		
MATRIX 5-2T/0.45M	MATRIX 5-2T/0.45	0.6	0.45	-	21.5	20.5	19.3	17.4	14.7	8.8	-	-	-	-	-	-	-		
MATRIX 5-3T/0.65M	MATRIX 5-3T/0.65	0.9	0.65	-	32.3	30.7	29.0	26.0	22.0	13.2	-	-	-	-	-	-	-		
MATRIX 5-4T/0.9 M	MATRIX 5-4T/0.9	1.2	0.9	-	43.0	41.0	38.6	34.7	29.4	17.6	-	-	-	-	-	-	-		
MATRIX 5-5T/1.3M	MATRIX 5-5T/1.3	1.8	1.3	-	54.0	51.0	48.5	43.5	36.7	22.0	-	-	-	-	-	-	-		
MATRIX 5-6T/1.3M	MATRIX 5-6T/1.3	1.8	1.3	-	64.5	61.5	58.0	52.0	44.0	26.4	-	-	-	-	-	-	-		
MATRIX 5-7T/1.5 M	MATRIX 5-7T/1.5	2	1.5	-	75.5	72.0	67.5	61.0	51.5	30.8	-	-	-	-	-	-	-		
MATRIX 5-8T/2.2 M	MATRIX 5-8T/2.2	3	2.2	-	86.0	82.0	77.0	69.5	58.5	35.2	-	-	-	-	-	-	-		
MATRIX 5-9T/2.2 M	MATRIX 5-9T/2.2	3	2.2	-	97.0	92.0	87.0	78.0	66.0	39.6	-	-	-	-	-	-	-		
MATRIX 10-2T/0.75M	MATRIX 10-2T/0.75	1	0.75	-	-	-	22.2	21.4	20.6	19.1	17.0	12.8	5.8	-	-	-	-		
MATRIX 10-3T/1.3M	MATRIX 10-3T/1.3	1.8	1.3	-	-	-	33.3	32.1	30.9	28.6	25.5	19.3	8.7	-	-	-	-		
MATRIX 10-4T/1.5M	MATRIX 10-4T/1.5	2	1.5	-	-	-	44.5	43.0	41.0	38.1	34.0	25.7	11.6	-	-	-	-		
MATRIX 10-5T/2.2M	MATRIX 10-5T/2.2	3	2.2	-	-	-	55.5	53.5	51.5	47.5	42.5	32.1	14.5	-	-	-	-		
MATRIX 10-6T/2.2M	MATRIX 10-6T/2.2	3	2.2	-	-	-	66.5	64.5	62.0	57.0	51.0	38.5	17.4	-	-	-	-		
MATRIX 18-2T/1.5M	MATRIX 18-2T/1.5	2	1.5	-	-	-	-	-	-	22.0	21.3	20.2	18.7	16.8	14.2	10.3	5.2		
MATRIX 18-3T/2.2M	MATRIX 18-3T/2.2	3	2.2	-	-	-	-	-	-	33.0	31.9	30.4	28.1	25.2	21.3	15.5	7.8		
-	MATRIX 18-4T/3	4	3	-	-	-	-	-	-	44.0	42.5	40.5	37.4	33.6	28.4	20.6	10.4		
-	MATRIX 18-5T/4	5.5	4	-	-	-	-	-	-	55.0	53.0	50.5	47.0	42.0	35.5	25.8	13.0		
-	MATRIX 18-6T/4	5.5	4	-	-	-	-	-	-	66.0	64.0	60.5	56.0	50.5	42.5	30.9	15.6		

DIMENSIONS



MATRIX

HORIZONTAL MULTISTAGE CENTRIFUGAL ELECTRIC PUMPS

in AISI 304

MATRIX 3 DIMENSIONS TABLE

Modello	Fig.	Dimensioni [mm]															Peso [kg]	
		B	C	D	F	H3 [1]	H4 [2]	L	R	T [2]	V [1]	W	D1	D2	*	*		
MATRIX 3-2T/0.45M	1	360	-	171	-	103	-	200	86,5	151,5	PG11	-	-	88÷97	1"	1"	8,5	-
MATRIX 3-2T/0.45	1	360	-	171	-	103	192	-	-	151,5	-	PG11	-	88÷97	1"	1"	8,4	-
MATRIX 3-3T/0.65M	1	360	-	171	-	103	-	200	86,5	151,5	PG11	-	-	88÷97	1"	1"	9,9	-
MATRIX 3-3T/0.65	1	360	-	171	-	103	192	-	-	151,5	-	PG11	-	88÷97	1"	1"	9,8	-
MATRIX 3-4T/0.65M	1	384	-	171	-	127	-	200	86,5	175,5	PG11	-	-	88÷97	1"	1"	10,6	-
MATRIX 3-4T/0.65	1	384	-	171	-	127	192	-	-	175,5	-	PG11	-	88÷97	1"	1"	10,4	-
MATRIX 3-5T/0.75M	1	408	-	171	-	151	-	200	86,5	199,5	PG11	-	-	88÷97	1"	1"	12,5	-
MATRIX 3-5T/0.75	1	408	408	171	-	151	192	-	-	199,5	-	PG11	M16x1.5	88÷97	1"	1"	12,4	12,4
MATRIX 3-6T/0.9M	1	432	-	171	-	175	-	219	106	223,5	M20x1,5	-	-	88÷97	1"	1"	13,7	-
MATRIX 3-6T/0.9	1	444	444	171	-	175	192	-	-	223,5	-	PG11	M16x1.5	88÷97	1"	1"	13,6	13,6
MATRIX 3-7T/1.3M	1	493	-	198	110,5	199	-	226	112	247,5	M20x1,5	-	-	88÷97	1"	1"	16,3	-
MATRIX 3-7T/1.3	1	493	518	198	110,5	199	209	-	-	247,5	-	PG11	M20x1.5	88÷97	1"	1"	17,0	17,9
MATRIX 3-8T/1.3M	1	517	-	198	134,5	223	-	226	112	271,5	M20x1,5	-	-	88÷97	1"	1"	16,3	-
MATRIX 3-8T/1.3	1	517	542	198	134,5	223	209	-	-	271,5	-	PG11	M20x1.5	88÷97	1"	1"	17,8	18,7
MATRIX 3-9T/1.5M	1	541	-	198	158,5	247	-	226	112	295,5	M20x1,5	-	-	88÷97	1"	1"	18,3	-
MATRIX 3-9T/1.5	1	554	566,5	198	158,5	247	209	-	-	295,5	-	PG11	M20x1.5	88÷97	1"	1"	20,0	20,9

[1]= Three-phase only

[2]= Single phase only

MATRIX 5-10-18 DIMENSIONS TABLE

Modello	Fig.	Dimensioni [mm]																				Peso [kg]		
		B	C	D	F	H	H1	H3 [1]	H4 [2]	L	R	T [2]	V [1]	W	W1	W2	M1	N1	N2	S1	D1		D2	
MATRIX 5-2T/0.45 M	1	360	171	-	103	-	-	-	200	86,5	151,5	PG11	-	88÷97	-	-	-	-	-	-	-	1 1/4	1"	8,5
MATRIX 5-2T/0.45	1	360	171	-	103	-	-	192	-	-	151,5	-	PG11	88÷97	-	-	-	-	-	-	-	1 1/4	1"	8,4
MATRIX 5-3T/0.65 M	1	360	171	-	103	-	-	-	200	86,5	151,5	PG11	-	88÷97	-	-	-	-	-	-	-	1 1/4	1"	9,9
MATRIX 5-3T/0.65	1	360	171	-	103	-	-	192	-	-	151,5	-	PG11	88÷97	-	-	-	-	-	-	-	1 1/4	1"	9,8
MATRIX 5-4T/0.9 M	1	384	171	-	127	-	-	-	219	106	175,5	M20x1,5	-	88÷97	-	-	-	-	-	-	-	1 1/4	1"	12,2
MATRIX 5-4T/0.9	1	396	171	-	127	-	-	192	-	-	175,5	-	M16x1,5	88÷97	-	-	-	-	-	-	-	1 1/4	1"	12,4
MATRIX 5-5T/1.3 M	1	445	198	-	151	-	-	-	226	112	199,5	M20x1,5	-	88÷97	-	-	-	-	-	-	-	1 1/4	1"	15,8
MATRIX 5-5T/1.3	1	470	198	-	151	-	-	209	-	-	199,5	-	M20x1,5	88÷97	-	-	-	-	-	-	-	1 1/4	1"	16,7
MATRIX 5-6T/1.3 M	1	469	198	-	175	-	-	-	226	112	223,5	M20x1,5	-	88÷97	-	-	-	-	-	-	-	1 1/4	1"	15,2
MATRIX 5-6T/1.3	1	494	198	-	175	-	-	209	-	-	223,5	-	M20x1,5	88÷97	-	-	-	-	-	-	-	1 1/4	1"	17,1
MATRIX 5-7T/1.5 M	1	493	198	110,5	199	-	-	-	226	112	247,5	M20x1,5	-	88÷97	-	-	-	-	-	-	-	1 1/4	1"	18,3
MATRIX 5-7T/1.5	1	518,5	198	110,5	199	-	-	209	-	-	247,5	-	M20x1,5	88÷97	-	-	-	-	-	-	-	1 1/4	1"	19,6
MATRIX 5-8T/2.2 M	2	565	-	134,5	223	90	190	-	231	112	325,5	M20x1,5	-	117,5	125	155	30	140	170	9	1 1/4	1"	22,3	
MATRIX 5-8T/2.2	1	542,5	198	134,5	223	-	-	209	-	-	271,5	-	M20x1,5	88÷97	-	-	-	-	-	-	-	1 1/4	1"	19,6
MATRIX 5-9T/2.2 M	2	589	-	158,5	247	90	190	-	231	112	349,5	M20x1,5	-	117,5	125	155	30	140	170	9	1 1/4	1"	23,3	
MATRIX 5-9T/2.2	1	566,5	198	158,5	247	-	-	209	-	-	295,5	-	M20x1,5	88÷97	-	-	-	-	-	-	-	1 1/4	1"	19,7
MATRIX 10-2T/0.75 M	1	379	175	-	118	-	-	-	200	86,5	170,5	PG11	-	92÷101	-	-	-	-	-	-	-	1 1/2	1 1/4	11,3
MATRIX 10-2T/0.75	1	379	175	-	118	-	-	192	-	-	170,5	-	M16x1,5	92÷101	-	-	-	-	-	-	-	1 1/2	1 1/4	11,2
MATRIX 10-3T/1.3 M	1	416	202	-	118	-	-	-	226	112	170,5	M20x1,5	-	92÷101	-	-	-	-	-	-	-	1 1/2	1 1/4	14,3
MATRIX 10-3T/1.3	1	441	202	-	118	-	-	209	-	-	170,5	-	M20x1,5	92÷101	-	-	-	-	-	-	-	1 1/2	1 1/4	14,5
MATRIX 10-4T/1.5 M	1	446	202	-	148	-	-	-	226	112	200,5	M20x1,5	-	92÷101	-	-	-	-	-	-	-	1 1/2	1 1/4	15,6
MATRIX 10-4T/1.5	1	471,5	202	-	148	-	-	209	-	-	200,5	-	M20x1,5	92÷101	-	-	-	-	-	-	-	1 1/2	1 1/4	18,2
MATRIX 10-5T/2.2 M	2	524	-	-	178	90	190	-	231	112	284,5	M20x1,5	-	121,5	125	155	30	140	170	9	1 1/2	1 1/4	21,8	
MATRIX 10-5T/2.2	1	501,5	202	-	178	-	-	209	-	-	230,5	-	M20x1,5	92÷101	-	-	-	-	-	-	-	1 1/2	1 1/4	18,8
MATRIX 10-6T/2.2 M	2	554	-	118,5	208	90	190	-	231	112	314,5	M20x1,5	-	121,5	125	155	30	140	170	9	1 1/2	1 1/4	22,1	
MATRIX 10-6T/2.2	1	531,5	202	118,5	208	-	-	209	-	-	260,5	-	M20x1,5	92÷101	-	-	-	-	-	-	-	1 1/2	1 1/4	19,2
MATRIX 18-2T/1.5M	1	442	205	-	141	-	-	-	226	112	196,5	M20x1,5	-	95÷104	-	-	-	-	-	-	-	2"	1 1/2	14,5
MATRIX 18-2T/1.5M	1	467,5	205	-	141	-	-	209	-	-	196,5	-	M20x1,5	95÷104	-	-	-	-	-	-	-	2"	1 1/2	17,1
MATRIX 18-3T/2.2M	2	490	-	-	141	90	190	-	231	112	250,5	M20x1,5	-	124,5	125	155	30	140	170	9	2"	1 1/2	20,7	
MATRIX 18-3T/2.2	1	467,5	205	-	141	-	-	209	-	-	196,5	-	M20x1,5	95÷104	-	-	-	-	-	-	-	2"	1 1/2	18,1
MATRIX 18-4T/3	2	565	-	-	178,5	90	190	214	-	-	288	-	M20x1,5	124,5	125	155	30	140	170	9	2"	1 1/2	23,8	
MATRIX 18-5T/4	2	615	-	123	216	100	200	241	-	-	315	-	M20x1,5	114	140	170	35	160	192	11	2"	1 1/2	33,2	
MATRIX 18-6T/4	2	652	-	160,5	253,5	100	200	241	-	-	352,5	-	M20x1,5	114	140	170	35	160	192	11	2"	1 1/2	34,2	

[1]= Three-phase only

[2]= Single phase only

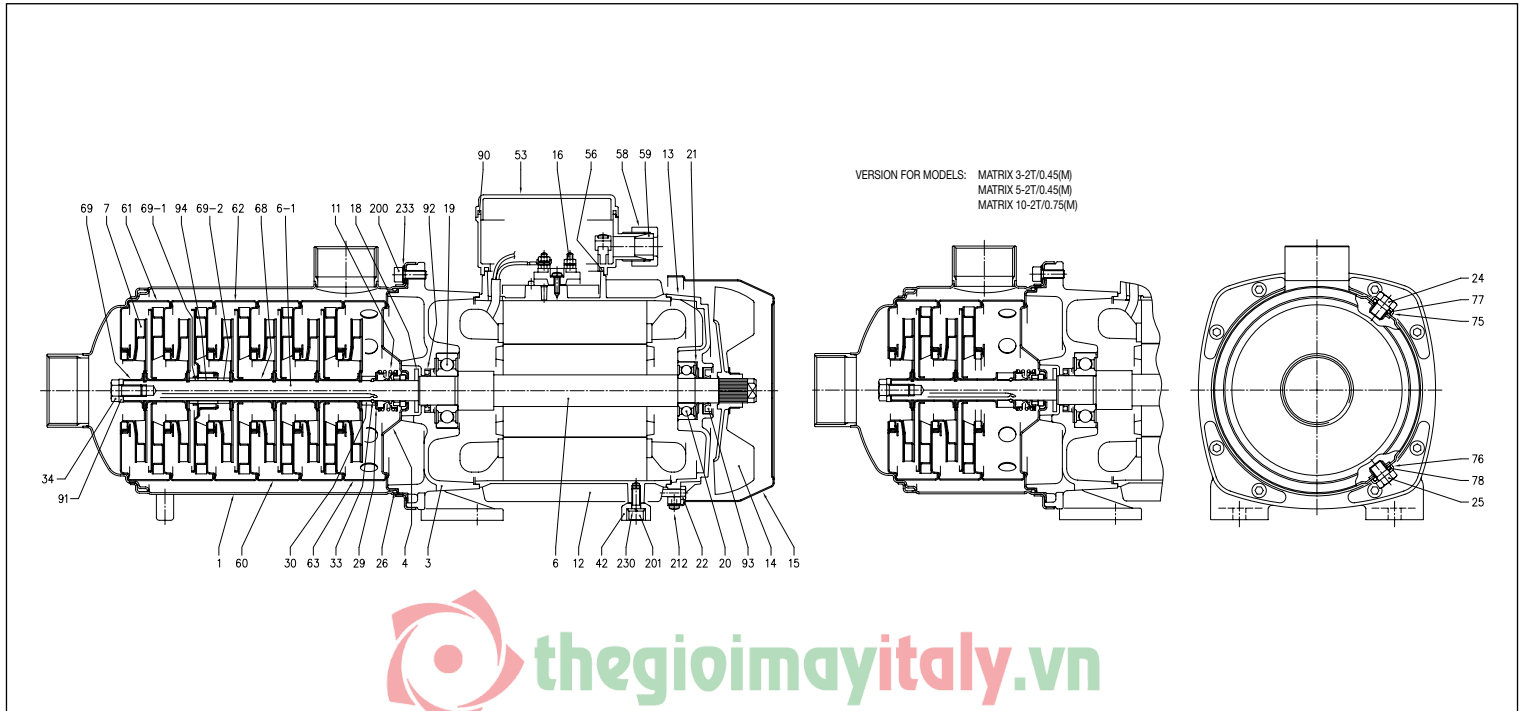
The content of this publication should not be considered mandatory. EBARA Pumps Europe S.p.A. reserves the right to change the content without prior notice.

MATRIX

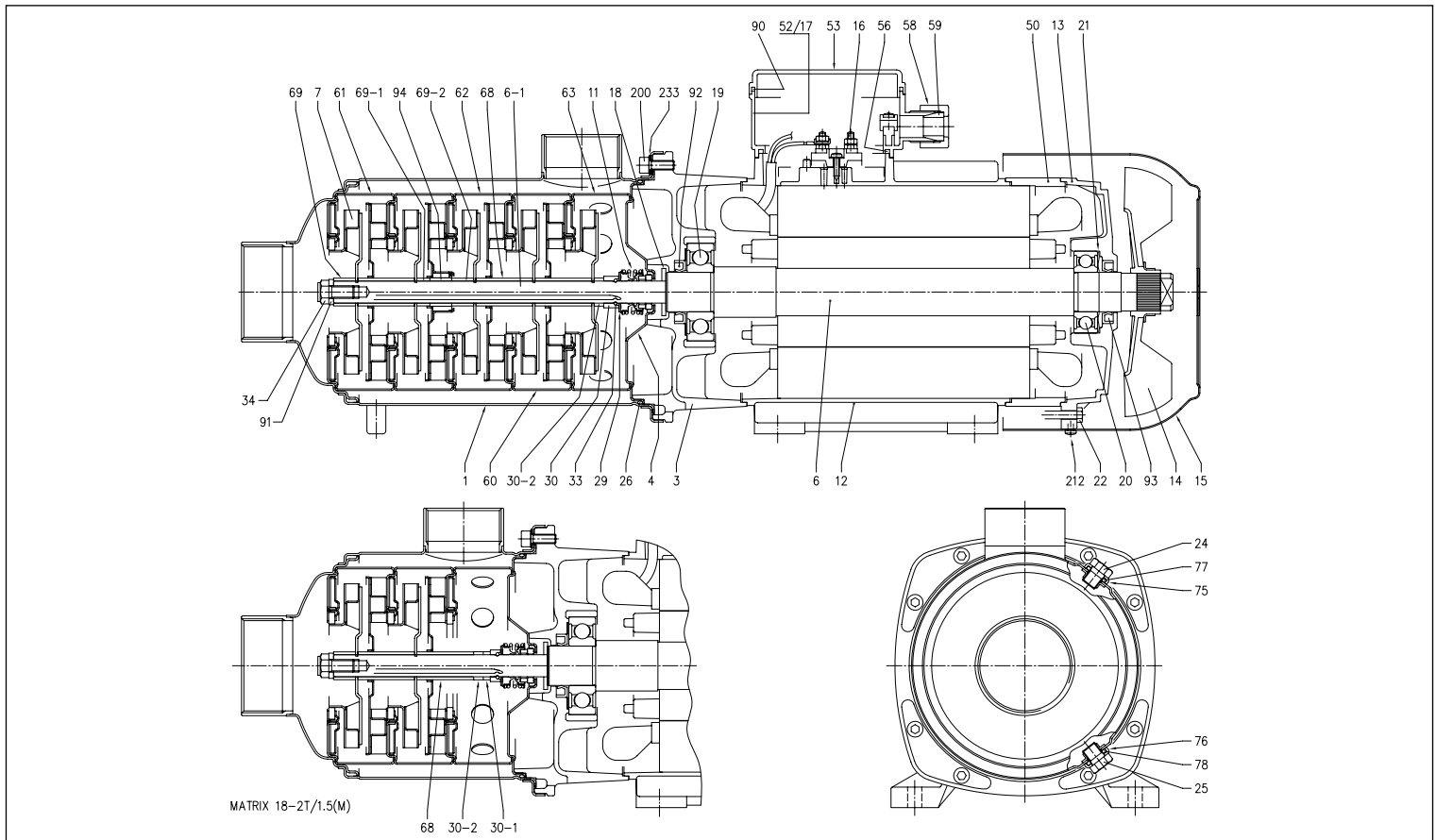
HORIZONTAL MULTISTAGE CENTRIFUGAL ELECTRIC PUMPS

in AISI 304

MATRIX 3-5-10 SECTIONAL VIEW



MATRIX 18 SECTIONAL VIEW



The content of this publication should not be considered mandatory. EBARA Pumps Europe S.p.A. reserves the right to change the content without prior notice.

HORIZONTAL MULTISTAGE CENTRIFUGAL ELECTRIC PUMPS

in AISI 304

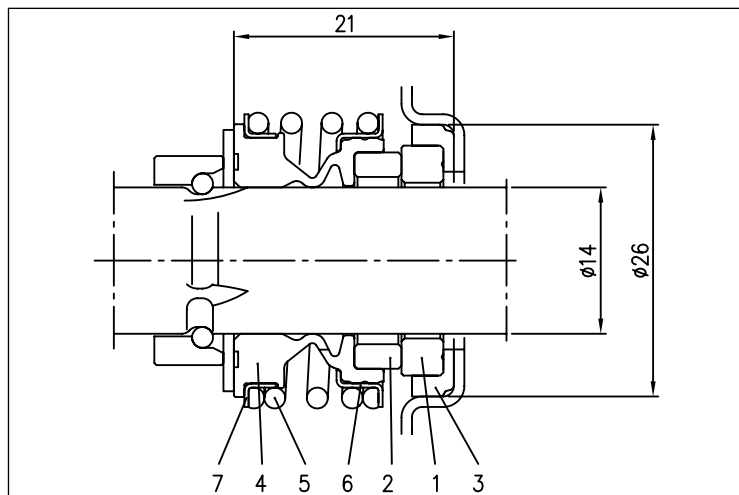
MATERIALS TABLE

Ref.	Name	Materials	Ref.	Name	Materials
1	Pump casing	EN 1.4301 (AISI 304)	42	Motor support	Aluminium
3	Motor bracket	EN AB-AISI11Cu2(Fe)	50	Motor spacer [2]	Aluminium
4	Casing cover	EN 1.4301 (AISI 304)	52	Capacitor-holder box [1]	ABS
6	Shaft	-	53	Capacitor-holder box cover [1]	ABS
6-1	Pump shaft	EN 1.4301 (AISI 304)	56	Box gasket	NBR
7	Impeller	EN 1.4301 (AISI 304)	58	Nut ring	-
11	Mechanical seal	Ceramic/Carbon/EPDM	59	Conic gasket	NBR
12	Motor frame	-	60	Intermediate stage	EN 1.4301 (AISI 304)+PTFE
13	Motor cover	Aluminium	61	Intermediate stage (suction)	EN 1.4301 (AISI 304)+PTFE
14	Fan	PA	62	Intermediate stage (bearing)	EN 1.4301 (AISI 304) + PTFE + Ceramic
15	Fan cover	Galvanised Fe P04	63	Intermediate stage (discharge)	EN 1.4301 (AISI 304) + PTFE
16	Terminal Box	-	68	Shaft casing (intermediate)	EN 1.4301 (AISI 304)
17	Terminal Box cover	Aluminium	69	Impeller spacer	EN 1.4301 (AISI 304)
18	Splash ring	NBR	69-1	Shaft casing (adapter)	EN 1.4301 (AISI 304)
19	Bearing (pump side)	-	69-2	Shaft casing (adapter)	EN 1.4301 (AISI 304)
20	Bearing (motor side)	-	75	Washer	EN 1.4301 (AISI 304)
21	Adjustment ring	Steel C70	76	Washer	EN 1.4301 (AISI 304)
22	Tie-rod	Galvanised Fe 42	77	O-Ring	EPDM
24	Plug	EN 1.4301 (AISI 304)	78	O-Ring	EPDM
25	Plug	EN 1.4301 (AISI 304)	90	Terminal box cover [1]	NBR
26	O-Ring	EPDM	91	Shaft washer	EN 1.4301 (AISI 304)
29	Washer	EN 1.4301 (AISI 304)	92	Seal ring	-
30	Holding ring	EN 1.4301 (AISI 304)	93	Seal ring	-
30-1-2	Shaft casing	EN 1.4301 (AISI 304)	94	Guide bush	WC - Tungsten carbide
33	Ring	EN 1.4301 (AISI 304)	200	Screw (pump body)	EN 1.4301 (AISI 304)
34	Screw	EN 1.4301 (AISI 304)	233	Plate	EN 1.4301 (AISI 304)

[1]= Single phase only

[2]= MATRIX 18-5T/4 and MATRIX 18-6T/4 only

MECHANICAL SEAL standard



MATERIALS TABLE standard

Ref.	Name	Materials
1	Fixed part	Ceramic
2	Rotating part	Carbon
3	Gasket	EPDM
4	Diaphragm	EPDM
5	Spring	EN 1.4402 (AISI 316)
6	Structure/frame	EN 1.4402 (AISI 316)
7	Retainer ring	EN 1.4402 (AISI 316)

SPECIAL MECHANICAL SEALS (on request)

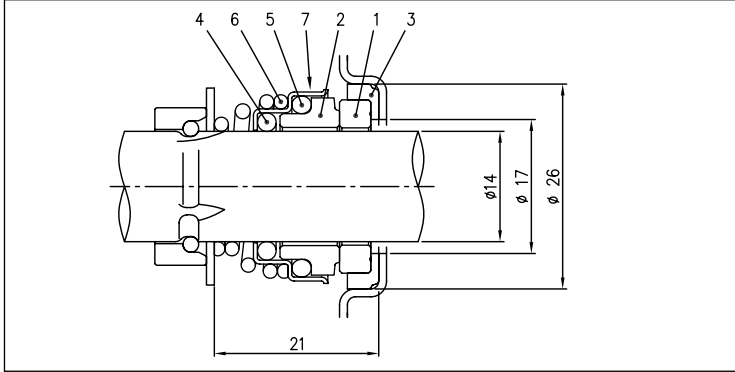
Ref.	Name	Materials			
		H Version	HS Version	U3Q1EGG Version	Q1AEGG Version
1	Fixed part	Carbon	Silicon Carbide	Tungsten Carbide	Silicon Carbide
2	Rotating part	Ceramic	Silicon Carbide	Silicon Carbide	Metallised carbon
3	Gasket	FKM	FKM	EPDM	EPDM
4	Diaphragm	FKM	FKM	EPDM	EPDM
5	Spring	EN 1.4402 (AISI 316)	EN 1.4402 (AISI 316)	EN 1.4402 (AISI 316)	EN 1.4402 (AISI 316)
6	Structure/frame	EN 1.4402 (AISI 316)	EN 1.4402 (AISI 316)	EN 1.4402 (AISI 316)	EN 1.4402 (AISI 316)
7	Retainer ring	EN 1.4402 (AISI 316)	EN 1.4402 (AISI 316)	EN 1.4402 (AISI 316)	EN 1.4402 (AISI 316)

MATRIX

HORIZONTAL MULTISTAGE CENTRIFUGAL ELECTRIC PUMPS

in AISI 304

MECHANICAL SEAL HIGH TEMPERATURE



MATERIALS TABLE HIGH TEMPERATURE

Ref.	Name	Material
1	Stationary seal ring	Ceramic
2	Rotary seal ring	Carbon
3	Gasket	EPDM
4	O-Ring	EPDM
5	O-Ring	EPDM
6	Spring	EN 1.4402 (AISI 316)
7	Retainer ring	EN 1.4301 (AISI 304)

ELECTRIC DATA TABLE

Model	Single phase 230V	Three phase 230/400V	P ₂		Efficiency		Capacitor		Efficiency			P ₁		Absorbed Current		
			[HP]	[kW]	Single phase	Three phase	Single phase	V _c	Three phase			Single phase	Three phase	Single phase	Three phase	Three phase
							μF		50%	75%	100%	[kW]	[kW]	230V	230V	400V
MATRIX 3-2T/0.45M	MATRIX 3-2T/0.45	MATRIX 3-2T/0.45	0,6	0,45	-	-	12,5	450	-	-	-	0,73	0,72	3,2	2,3	1,3
MATRIX 3-3T/0.65M	MATRIX 3-3T/0.65	MATRIX 3-3T/0.65	0,9	0,65	-	-	16	450	-	-	-	0,97	0,85	4,5	2,8	1,6
MATRIX 3-4T/0.65M	MATRIX 3-4T/0.65	MATRIX 3-4T/0.65	0,9	0,65	-	-	16	450	-	-	-	0,97	0,85	4,5	2,8	1,6
MATRIX 3-5T/0.75M	MATRIX 3-5T/0.75	MATRIX 3-5T/0.75	1,0	0,75	-	IE3	25	450	80,9	82,3	82,1	1,14	0,91	5,4	3,0	1,7
MATRIX 3-6T/0.9M	MATRIX 3-6T/0.9	MATRIX 3-6T/0.9	1,2	0,9	-	IE3	31,5	450	81,7	83,1	82,4	1,28	1,34	5,7	4,3	2,5
MATRIX 3-7T/1.3M	MATRIX 3-7T/1.3	MATRIX 3-7T/1.3	1,8	1,3	-	IE3	35	450	83,0	85,8	85,6	1,75	1,77	7,8	5,8	3,3
MATRIX 3-8T/1.3M	MATRIX 3-8T/1.3	MATRIX 3-8T/1.3	1,8	1,3	-	IE3	35	450	83,0	85,8	85,6	1,75	1,77	7,8	5,8	3,3
MATRIX 3-9T/1.5M	MATRIX 3-9T/1.5	MATRIX 3-9T/1.5	2,0	1,5	-	IE3	40	450	82,7	86,1	87,0	1,95	1,72	8,7	6,6	3,8
MATRIX 5-2T/0.45M	MATRIX 5-2T/0.45	MATRIX 5-2T/0.45	0,6	0,45	-	-	12,5	450	-	-	-	0,73	0,72	3,2	2,3	1,3
MATRIX 5-3T/0.65M	MATRIX 5-3T/0.65	MATRIX 5-3T/0.65	0,9	0,65	-	-	16	450	-	-	-	0,97	0,85	4,5	2,8	1,6
MATRIX 5-4T/0.9M	MATRIX 5-4T/0.9	MATRIX 5-4T/0.9	1,2	0,9	-	IE3	31,5	450	81,7	83,1	82,4	1,28	1,34	5,7	4,3	2,5
MATRIX 5-5T/1.3M	MATRIX 5-5T/1.3	MATRIX 5-5T/1.3	1,8	1,3	-	IE3	35	450	83,0	85,8	85,6	1,75	1,77	7,8	5,8	3,3
MATRIX 5-6T/1.3M	MATRIX 5-6T/1.3	MATRIX 5-6T/1.3	1,8	1,3	-	IE3	35	450	83,0	85,8	85,6	1,75	1,77	7,8	5,8	3,3
MATRIX 5-7T/1.5M	MATRIX 5-7T/1.5	MATRIX 5-7T/1.5	2,0	1,5	-	IE3	40	450	82,7	86,1	87,0	1,95	1,72	8,7	6,6	3,8
MATRIX 5-8T/2.2M	MATRIX 5-8T/2.2	MATRIX 5-8T/2.2	3,0	2,2	-	IE3	50	450	86,2	87,0	86,0	2,92	2,55	13,0	8,2	4,7
MATRIX 5-9T/2.2M	MATRIX 5-9T/2.2	MATRIX 5-9T/2.2	3,0	2,2	-	IE3	50	450	86,2	87,0	86,0	2,92	2,55	13,0	8,2	4,7
MATRIX 10-2T/0.75M	MATRIX 10-2T/0.75	MATRIX 10-2T/0.75	1,0	0,75	-	IE3	25	450	80,9	82,3	82,1	1,14	0,91	5,4	3,0	1,7
MATRIX 10-3T/1.3M	MATRIX 10-3T/1.3	MATRIX 10-3T/1.3	1,8	1,3	-	IE3	35	450	83,0	85,8	85,6	1,75	1,77	7,8	5,8	3,3
MATRIX 10-4T/1.5M	MATRIX 10-4T/1.5	MATRIX 10-4T/1.5	2,0	1,5	-	IE3	40	450	82,7	86,1	87,0	1,95	1,72	8,7	6,6	3,8
MATRIX 10-5T/2.2M	MATRIX 10-5T/2.2	MATRIX 10-5T/2.2	3,0	2,2	-	IE3	50	450	86,2	87,0	86,0	2,92	2,55	13,0	8,2	4,7
MATRIX 10-6T/2.2M	MATRIX 10-6T/2.2	MATRIX 10-6T/2.2	3,0	2,2	-	IE3	50	450	86,2	87,0	86,0	2,92	2,55	13,0	8,2	4,7
MATRIX 18-2T/1.5M	MATRIX 18-2T/1.5	MATRIX 18-2T/1.5	2,0	1,5	-	IE3	40	450	82,7	86,1	87,0	1,95	1,72	8,7	6,6	3,8
MATRIX 18-3T/2.2M	MATRIX 18-3T/2.2	MATRIX 18-3T/2.2	3,0	2,2	-	IE3	50	450	86,2	87,0	86,0	2,92	2,55	13,0	8,2	4,7
-	MATRIX 18-4T/3	MATRIX 18-4T/3	4,0	3	-	IE3	-	-	85,9	87,5	87,1	-	3,44	-	11,1	6,4
-	MATRIX 18-5T/4	MATRIX 18-5T/4	5,5	4	-	IE3	-	-	85,8	88,3	88,4	-	4,52	-	15,1	8,7
-	MATRIX 18-6T/4	MATRIX 18-6T/4	5,5	4	-	IE3	-	-	85,8	88,3	88,4	-	4,52	-	15,1	8,7

The content of this publication should not be considered mandatory. EBARA Pumps Europe S.p.A. reserves the right to change the content without prior notice.

MATRIX

HORIZONTAL MULTISTAGE CENTRIFUGAL ELECTRIC PUMPS

in AISI 304

NOISE DATA TABLE

Model		P ₂		L _{PA} - dB(A)*
Single phase 230V	Three phase 230/400V	[HP]	[kW]	
MATRIX 3-2T/0.45M	MATRIX 3-2T/0.45	0.6	0.45	61
MATRIX 3-3T/0.65M	MATRIX 3-3T/0.65	0.9	0.65	
MATRIX 3-4T/0.65M	MATRIX 3-4T/0.65	0.9	0.65	62
MATRIX 3-5T/0.75M	MATRIX 3-5T/0.75	1.0	0.75	
MATRIX 3-6T/0.9M	MATRIX 3-6T/0.9	1.2	0.9	64
MATRIX 3-7T/1.3M	MATRIX 3-7T/1.3	1.8	1.3	
MATRIX 3-8T/1.3M	MATRIX 3-8T/1.3	1.8	1.3	
MATRIX 3-9T/1.5M	MATRIX 3-9T/1.5	2.0	1.5	61
MATRIX 5-2T/0.45M	MATRIX 5-2T/0.45	0.6	0.45	
MATRIX 5-3T/0.65M	MATRIX 5-3T/0.65	0.9	0.65	62
MATRIX 5-4T/0.9 M	MATRIX 5-4T/0.9	1.2	0.9	
MATRIX 5-5T/1.3M	MATRIX 5-5T/1.3	1.8	1.3	64
MATRIX 5-6T/1.3M	MATRIX 5-6T/1.3	1.8	1.3	
MATRIX 5-7T/1.5 M	MATRIX 5-7T/1.5	2.0	1.5	65
MATRIX 5-8T/2.2 M	MATRIX 5-8T/2.2	3.0	2.2	
MATRIX 5-9T/2.2 M	MATRIX 5-9T/2.2	3.0	2.2	62
MATRIX 10-2T/0.75M	MATRIX 10-2T/0.75	1.0	0.75	
MATRIX 10-3T/1.3M	MATRIX 10-3T/1.3	1.8	1.3	64
MATRIX 10-4T/1.5M	MATRIX 10-4T/1.5	2.0	1.5	
MATRIX 10-5T/2.2M	MATRIX 10-5T/2.2	3.0	2.2	65
MATRIX 10-6T/2.2M	MATRIX 10-6T/2.2	3.0	2.2	
MATRIX 18-2T/1.5M	MATRIX 18-2T/1.5	2.0	1.5	64
MATRIX 18-3T/2.2M	MATRIX 18-3T/2.2	3.0	2.2	
-	MATRIX 18-4T/3	4.0	3	68
-	MATRIX 18-5T/4	5.5	4	
-	MATRIX 18-6T/4	5.5	4	69

* Mean value of several measurements at 1 m distance around the pump.
Tolerance ± 2.5 dB.

Insulation casing



For applications with refrigerant liquids or liquids with high thermal difference that may generate condensate